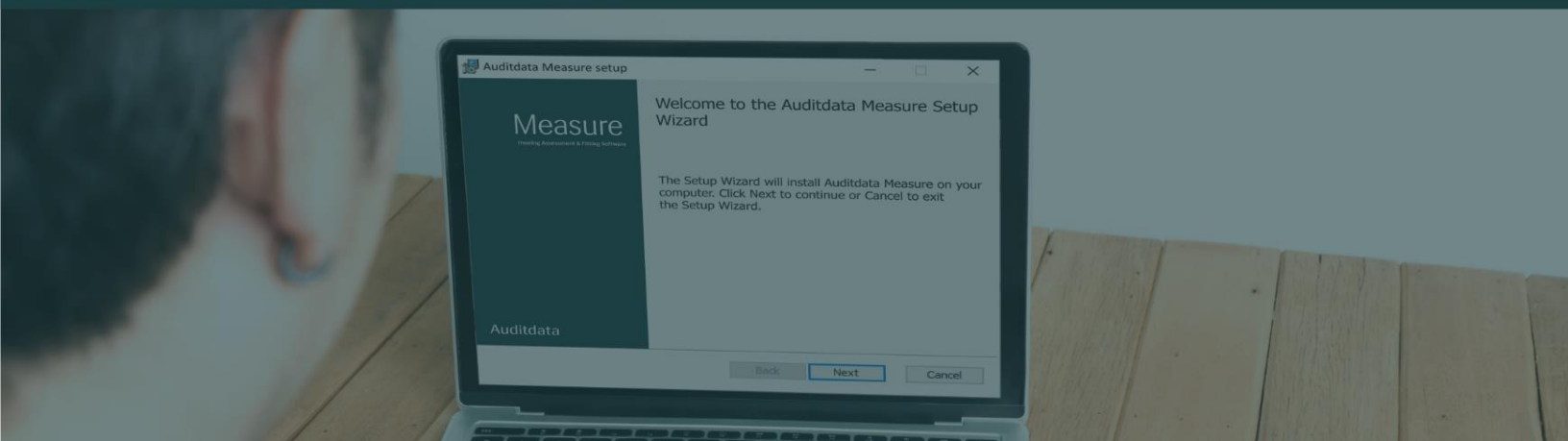


# Measure

# What's New

version 6.2.0



# Table of Contents

- 1 Introduction .....3
- 2 Wireless REM Probe Support.....3
- 3 Settings .....3
  - Default to Wireless Probe Microphones .....3
- 4 Device Management.....4
  - New Wireless Devices Tab.....4
- 5 REM & SM Enhancements.....4
  - Improved Device Management Access .....4
  - Device Selection Flexibility .....4
  - Status Bar Integration .....5
- 7 Release Notes 6.2.0 .....5
- 8 Support .....6

# 1 Introduction

We are excited to introduce Measure 6.2.0, a significant update specifically prepared for the launch of our first wireless device, the Wireless REM Probe. This innovative device brings new levels of flexibility and convenience to your audiological practice, and Measure 6.2.0 is fully equipped to support its advanced functionality. With enhanced device management and streamlined measurement controls, this update ensures seamless integration and optimal performance of the Wireless REM Probe, offering you a powerful tool for precise and efficient measurements.

# 2 Wireless REM Probe Support

Measure 6.2.0 introduces comprehensive support for the Wireless REM Probe. This update enables you to perform accurate and efficient wireless measurements, providing greater mobility and convenience without compromising on precision.

# 3 Settings

## Default to Wireless Probe Microphones

In this version, you can configure REM and SM measurements to use wireless probe microphones by default. When this setting is enabled, and the Wireless REM Probe is powered on and connected to the FU, it will automatically be selected for measurements in the REM/SM module.

REM

Display Settings

Target Settings

HIT

Measurement Settings

Presets

Standard REUR Presets

Average RECD

Target Rule

HL/MHA Simulation

Live REAG/REIG curve in REM 

Insertion Gain

☐ Automatically show REAG curve for a new measurement

☐ Peak Curve Averaging

☒ Enable single measurement result per test type in SM

☒ Enable fitting on 24 pins per octave

Room Equalization

☒ Perform EQ once per session in REM

☒ Perform EQ once per session in SM

☒ Default to Wireless Probe Microphones in REM and SM

## 4 Device Management

### New Wireless Devices Tab

The Device Management module now includes a dedicated Wireless Devices tab, allowing you to monitor the status of all connected wireless devices in real time.

Key features of this tab include:

1. **Device Information:** View the name and serial number (SN) of each connected wireless device.
2. **Status Overview:** Easily check the overall status of each device, including connection status:
  - Connected
  - Low Battery
  - Not Connected
3. **Battery Level:** Monitor the battery status with a percentage indicator and color-coded display:
  - **Green:** High battery level.
  - **Amber:** Medium battery level.
  - **Red:** Low battery level.
  - **Unknown:** Battery status is unavailable.

These comprehensive monitoring capabilities help ensure that your wireless devices are always ready for use and performing at their best.

## 5 REM & SM Enhancements

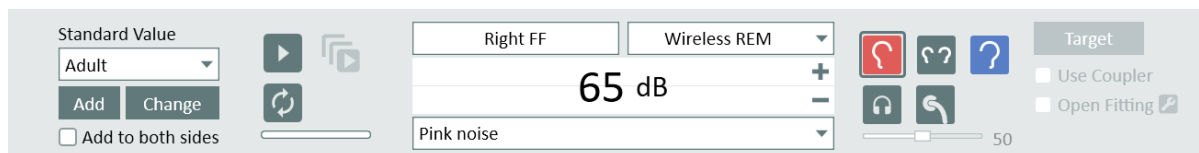
### Improved Device Management Access

To streamline your workflow, we've added a Device Management icon to the top bar of the REM & SM measurement screens, providing easier access to manage your connected devices.



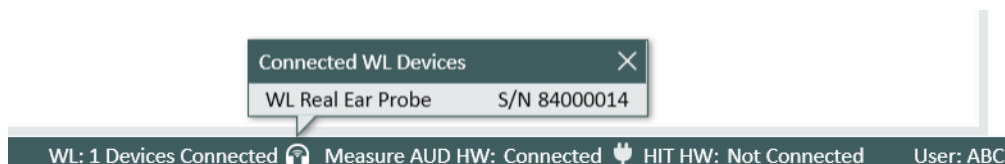
### Device Selection Flexibility

In the Measurement Controls panel, a new dropdown has been added, allowing you to choose between wireless and wired REM devices for your measurements. This feature offers greater flexibility and ensures that you can select the most appropriate device for all measurement scenarios.



## Status Bar Integration

You can now view real-time information about your connected wireless devices directly in the status bar, keeping you informed without interrupting your workflow.



## 7 Release Notes 6.2.0

Measure 6.2.0 is designed to seamlessly integrate with the new Wireless REM Probe, enhancing both functionality and user experience. To fully leverage the benefits of this update, be sure to consult the user manual for more details on setting up, connecting, and calibrating your wireless devices.

Besides mentioned above, this version of the Measure software contains the following enhancements:

### UI Enhancements

#### Bug fixes

#### Dependencies

This version supports NOAH versions 4 or higher. To use the Primus Panel under Auditbase System, Auditbase version 4.17.01 or higher is required.

#### Installation

The uninstallation of the previous version is done automatically.

To upgrade to Measure 6.2.0:

1. Run the set-up file: **Setup\_Measure\_6\_2\_0.exe**.
2. Follow the instructions on the screen.

# 8 Support

For further information, please visit [www.auditdata.com](http://www.auditdata.com).