

What's New



Table of Contents

1 INTRODUCTION	2
2 REPORTING	2
2.1 PDF FORMS.....	2
3 HIMSA INTEGRATION	3
3.1 IMC2 SUPPORT	3
4 AUDIOMETRY	3
4.1 CHANGE TRANSDUCER IF SELECTED ONE IS UNAVAILABLE.....	3
4.2 AUTO SELECTION OF THE NON-TEST CHANNEL TRANSDUCER.....	3
4.3 BINAURAL VIEW IS HIDDEN WHERE NOT AVAILABLE	3
5 SPEECH AUDIOMETRY	4
5.1 USE PERCENTAGE DECIMALS FOR WORD SCORING	4
5.2 VISIBILITY IMPROVEMENT FOR MCL AND UCL.....	5
5.3 HIDING MASKING AND DICHOTIC CONTROLS.....	5
6 REM	6
6.1 ENHANCED VISIBILITY FOR OCCLUDED MEASUREMENT	6
6.2 DISPLAYING CURSOR LINES DURING MEASUREMENT	6
7 CALIBRATION	6
7.1 PASSWORD PROTECTION FOR SOUND FIELD CALIBRATION	6
8 SYSTEM WIDE ENHANCEMENTS	6
8.1 REMEMBERING MONITORING LEVEL	6
8.2 FAST ACCESS TO HOW TO VIDEOS.....	7
8.3 OPENING MEASUREMENTS FROM GDT.....	7
9 GDPR	7
9.1 EXPORTING CLIENT WITH ANONYMIZED DATA.....	7
10 RELEASE NOTES 2.6.0.0	8
11 SUPPORT	9

1 Introduction

The purpose of this document is to give you an overview of the new features in Primus 2.6.0.0.

Please note this is NOT a mandatory update from the previous version, 2.6.0.0.

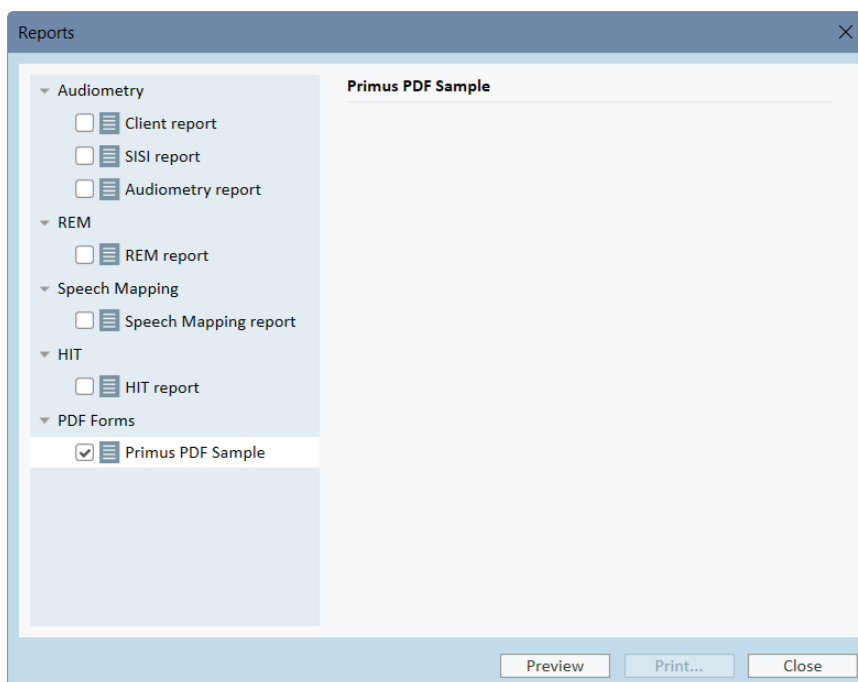
The first few sections give you a brief description of the most important new features. To get a full list of the enhancements and fixes done in this release, take a look at the [Release Notes](#) section.

2 Reporting

2.1 PDF Forms

Primus now includes interactive PDF forms with data fields available for all current reports. You can even create your own PDF forms using Adobe Acrobat. They can include client information, measurement data and other custom fields that you might find useful. PDF forms are easy to fill out, preview, print or send out. You can save time with less manual data entry and unnecessary document processing.

Click **Print** to open the **Reports** window with available PDF forms. Select a form and click **Preview** to open the report.



To find the file path where all PDF forms are stored, go to **Tools > Settings > General > Reporting** and locate **PDF Reports Folder**. You can specify any local folder or leave the default folder as is.

3 HIMSA Integration

3.1 IMC2 Support

Primus now supports HIMSA IMC2 (inter module communication) protocol which connects measurement and fitting software. This protocol allows to use Primus Hardware as Real Ear Measurement for automated fitting protocols (e.g. AutoFit) by Hearing Instrument Fitting software. You can also use IMC2 to view aided measurements from the Primus' REM module.

4 Audiometry

4.1 Change transducer if selected one is unavailable

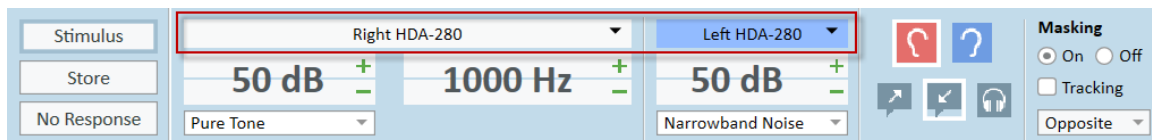
When a default transducer for the selected test type is not connected, Primus automatically switches to a compatible one. For instance, if the default insert microphone is not available, the system will search for another insert microphone. If no such microphone is connected, Primus then selects transducers from AC1, AC2 or AC3.

This applies to stimulus, masking and Channel 2 signals in the Pure Tone and Speech Audiometry modules.

Note: If you specify Bone Conductor, no other transducer will be selected.

4.2 Auto selection of the non-test channel transducer

After you select a certain transducer for the stimulus signal, this transducer type will also be used for the masking and Channel 2 signals. This does not apply to the BCL test type.



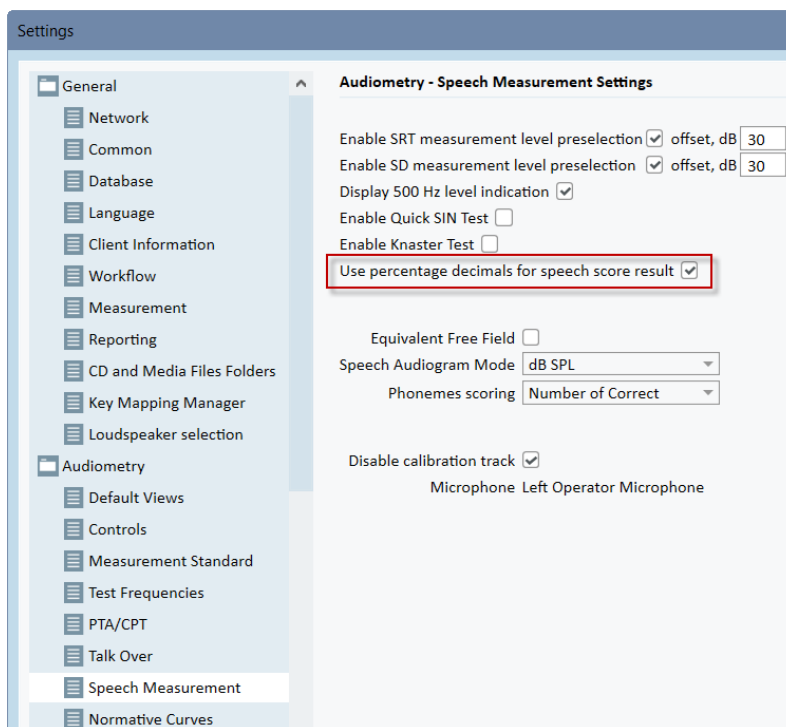
4.3 Binaural view is hidden where not available

Binaural view is hidden for the test types where it is not used – namely, HTL, BCL, SISI.

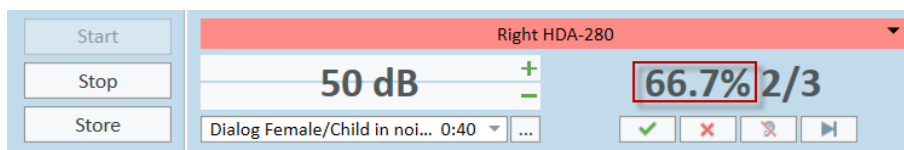
5 Speech Audiometry

5.1 Use percentage decimals for word scoring

You can now use percentage decimals for speech score results. To enable this functionality, go to **Tools > Settings > Audiometry > Speech Measurement** and tick the corresponding check box.



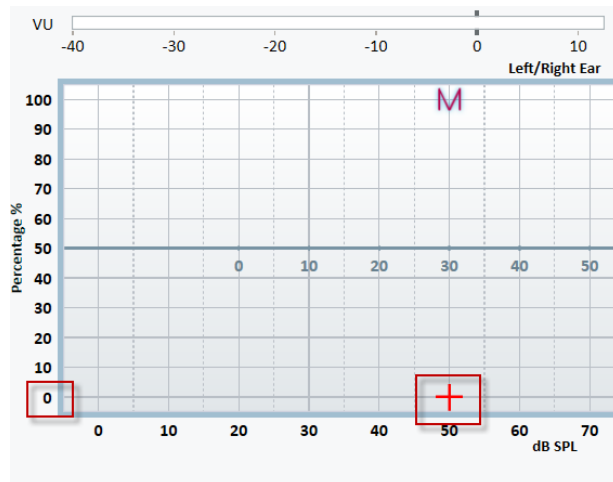
Your speech score results, as well as point details, are now displayed with one decimal.



What's New in Primus 2.6.0.0

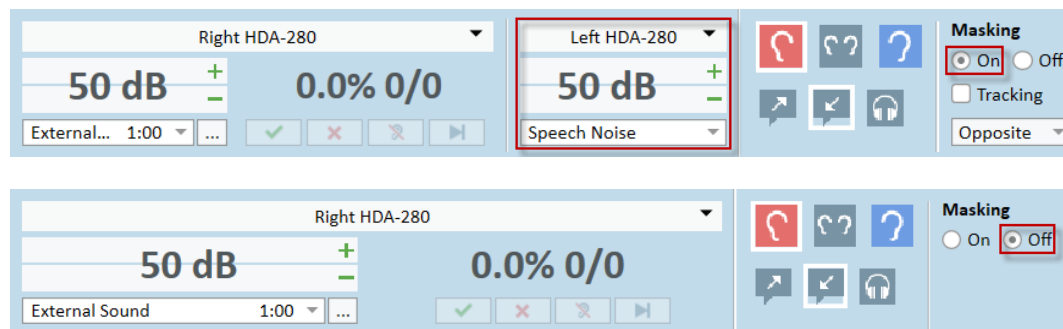
5.2 Visibility improvement for MCL and UCL

After you perform an MCL or a UCL measurement, the score symbol for the left ear and for both ears is displayed at 0%, while for the right ear – at 100% score. This way, you can get better overview of the graph without too many symbols overlaid.



5.3 Hiding masking and dichotic controls

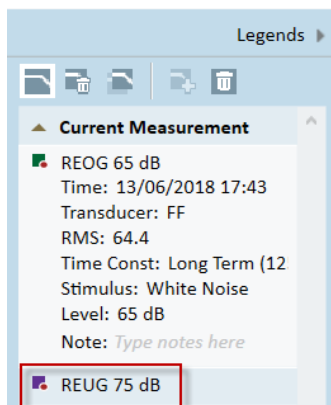
If masking or dichotic tests are off, their control panel remains hidden. Once you enable them, the panel is displayed.



6 REM

6.1 Enhanced visibility for Occluded Measurement

After performing Unaided Measurement and then switching to Occluded Measurement, REUG becomes visible in the Legends panel by default.



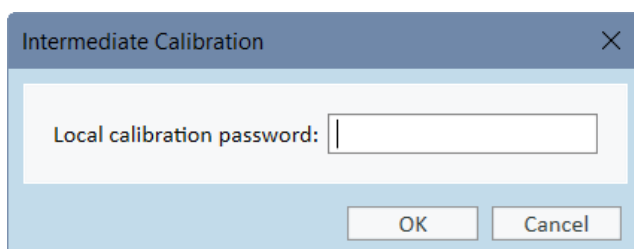
6.2 Displaying cursor lines during measurement

Overlay cursor lines are now visible when you perform REM measurements.

7 Calibration

7.1 Password protection for Sound Field Calibration

Sound Field Calibration in Primus is now password protected. Contact your local distributor to obtain your password.



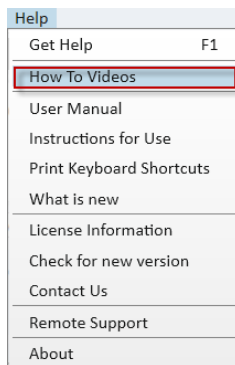
8 System Wide Enhancements

8.1 Remembering monitoring level

Primus preserves the level of the monitoring for each module. Monitoring remains on if you switch between modules.

8.2 Fast access to How To Videos

Select **Help > How To Videos** to watch Auditdata training videos on YouTube.



8.3 Opening measurements from GDT

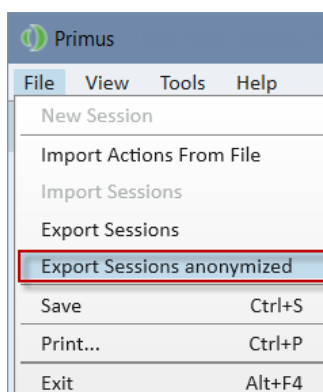
If you select a measurement from GDT, Primus opens the module and displays the corresponding action.

9 GDPR

9.1 Exporting client with anonymized data

You can now export a client to XML where client's personal data is anonymized. The first and last name fields will be populated by "XXXXX" and date of export correspondingly. Other personal data fields are left empty.

Go to the **File** menu and select **Export Sessions anonymized**.



```
<?xml version="1.0" encoding="utf-8"?>
<LocalSession xmlns:xsi="http://www.w3.org/2001/XMLSchema-
instance" xmlns:xsd="http://www.w3.org/2001/XMLSchema">
  <Patient>
    <FirstName>XXXXX</FirstName>
    <LastName>13/06/2018 14:13:05</LastName>
    <BirthDate xsi:nil="true" />
    <Gender>NotSpecified</Gender>
    <Address />
    <Additional>
```


10 Release Notes 2.6.0.0

This version of the Primus software release contains the following enhancements:

Reporting

- Use interactive PDF forms to view and print reports

HIMSA

- IMC2 interface support

Audiometry

- A compatible transducer is selected if current one is not connected
- Use the same transducer type for the stimulus and non-test channels
- Binaural view is hidden for the tests where it is not available
- Added support for the insert phone type ER 3C

Speech Audiometry

- Use decimals for word score percentage
- UCL/MCL - score is displayed at 0% (left ear and binaural) and 100% (right ear)
- If you disable masking or dichotic test, their controls will be hidden

REM

- REUG is visible by default when switching to Occluded Measurement
- Cursor lines remain visible during REM measurement
- Refresh transducer data for REM transducers

Calibration

- Password protection for free-field calibration

System Wide Enhancements

- Primus remembers monitoring levels for each module
- Access to How to videos from Help
- Automatically open selected measurements from GDT
- Date and time fields added to Primus GDT
- Added **A**, **W**, **Z** and **E** as possible curve style symbols

GDPR

- Added anonymized client export

Supported Languages

- English, German, French, Polish, Turkish, Danish, Finnish, Spanish, Italian, Hungarian, Chinese, Korean and Japanese.

Bug Fixes and Other Improvements

Dependencies

This version supports NOAH versions 3.7, NOAH 4, or higher.

What's New in Primus 2.6.0.0

To use the Primus Panel under AuditBase System, AuditBase version 4.17.01 or higher is required.

Installation

To upgrade to Primus 2.6.0.0:

1. Run the set-up file: Setup_Primus_2_6_0_0.exe.
2. Follow the instructions on the screen and your system will be updated.

11 Support

For further information, please visit www.auditdata.com.