

Primus

What's New

Version 3.3.1



Auditdata

Table of Contents

1 Introduction	3
2 License.....	3
3 Audiometry.....	4
3.1 Disabling SRT 50% calculation.....	4
4 Otoscopy.....	5
4.1 Support for multiple otoscopes	5
4.2 Otoscope Video and Picture quality settings.....	6
5 Release Notes 3.3.1	7
6 Support.....	8

1 Introduction

The purpose of this document is to give you an overview of the new features in Primus 3.3.1.

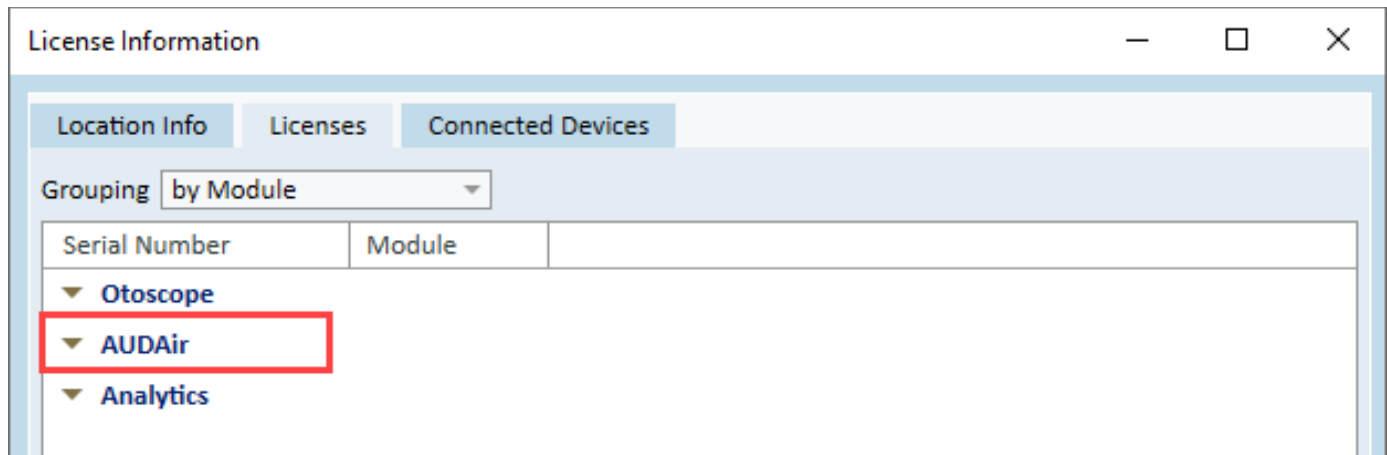
Please note this is NOT a mandatory update from the previous version, 3.3.0.

The first few sections give you a brief description of the most important new features. To get a full list of the enhancements and fixes done in this release, look at the [Release Notes](#) section.

2 License

Another license type has been introduced, allowing greater precision and flexibility in configuring the Primus software and offering an opportunity to allocate your company costs even more efficiently.

The **AudAir** license has been developed with those users in mind whose daily tasks involve running primarily Pure Tone measurements. This license type only supports air-coupled transducers.



3 Audiometry

3.1 Disabling SRT 50% calculation

For Speech audiometry tests, it is now possible to disable the notation symbol at 50% when determining the Speech Recognition Threshold (SRT).

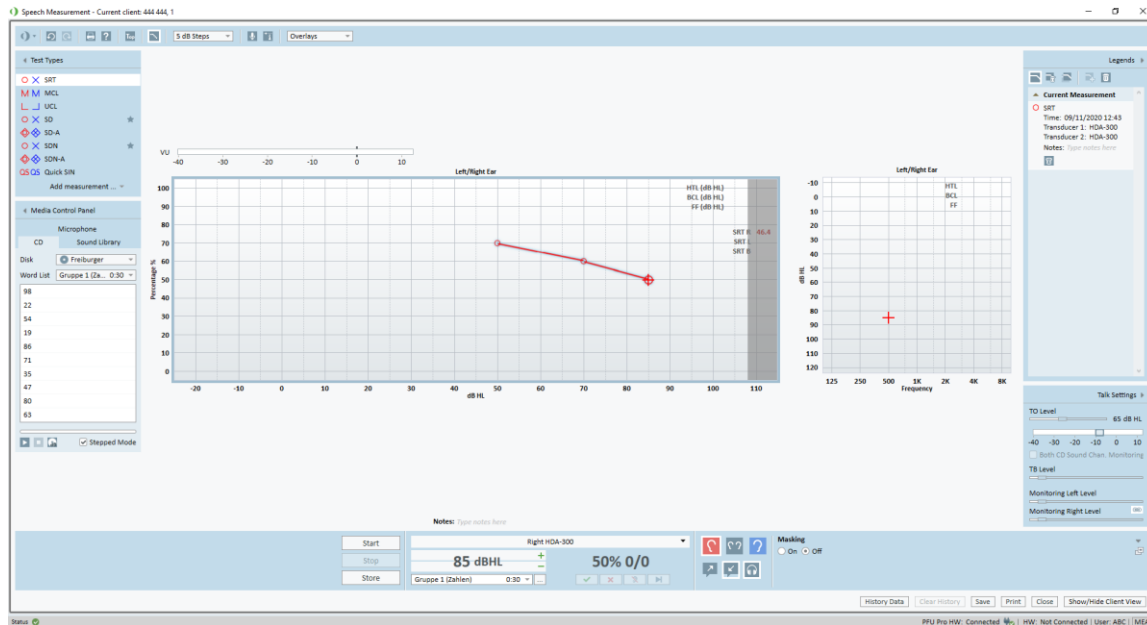
This option can be selected from **Tools > Test Definitions > Speech > SRT settings**:

The screenshot shows the 'Editor For Test Definition' dialog box with the following settings:

- General** tab: Name: SRT, Description: (empty), Test Type: SRT, Aided Condition: Unaided, Shortcut: T, SRT Type: SRT.
- Stimulus** tab: **Word scoring** sub-tab is active.
 - Stimulus** section: Signal Type: Speech, Transducer: Insert Earphone [NOT CONNEC], Default Ear Side: Right, Default Level, dB: 50, Use PTA Offset, dB: 0.
 - Masking** section: Masking: Masking, Sound: Speech Noise, Transducer: Insert Earphone [NOT CONNEC], Masking Side: Opposite, Default Level, dB: 50, Use masking from CD: (unchecked), Activate masking by default: (unchecked).
 - Other Settings** section: Step Level: 5 dB, Disable SRT 50% calculation.
 - Speech CD** section: CD Scheme: (None), Word List: (None).

Buttons: OK, Cancel

As a result, the audiogram will not have the 50% control line showing:



4 Otoscopy

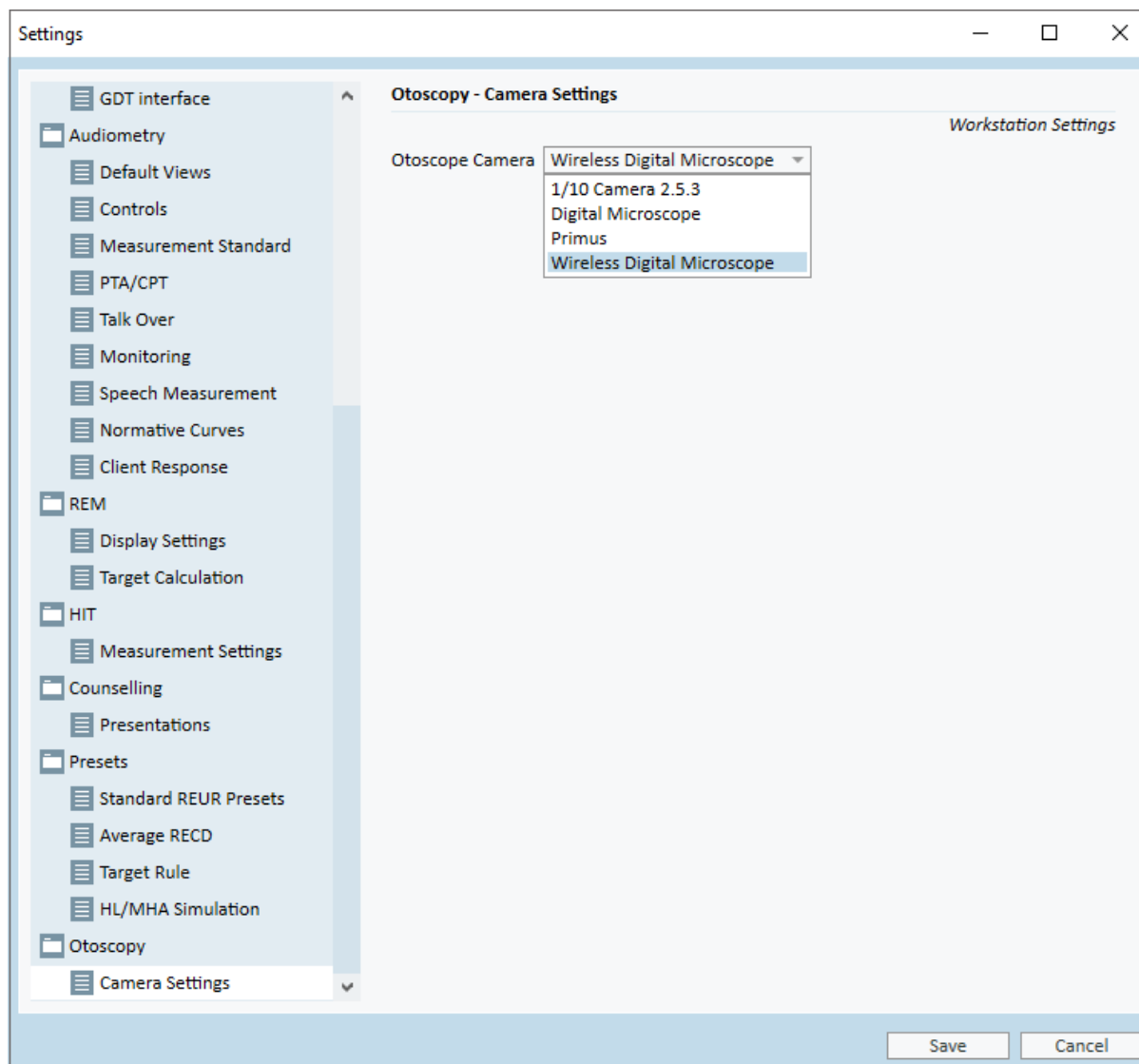
4.1 Support for multiple otoscopes

Primus users can now employ the following types of video cameras in their otoscopic examinations:

- Primus (Primus Legacy Video Otoscope, Orlvision)
- 1/10 Camera 2.5.3 (Orlvision Video Otoscope OX2)
- Digital Microscope (Firefly Wired)
- Wireless Digital Microscope (Firefly Wireless)

Note: All the required drivers and recommended software are supplied by the manufacturer.

The otoscope that will be used when running Primus can be preselected from the **Tools menu > Settings > Otoscopy > Camera Settings**.



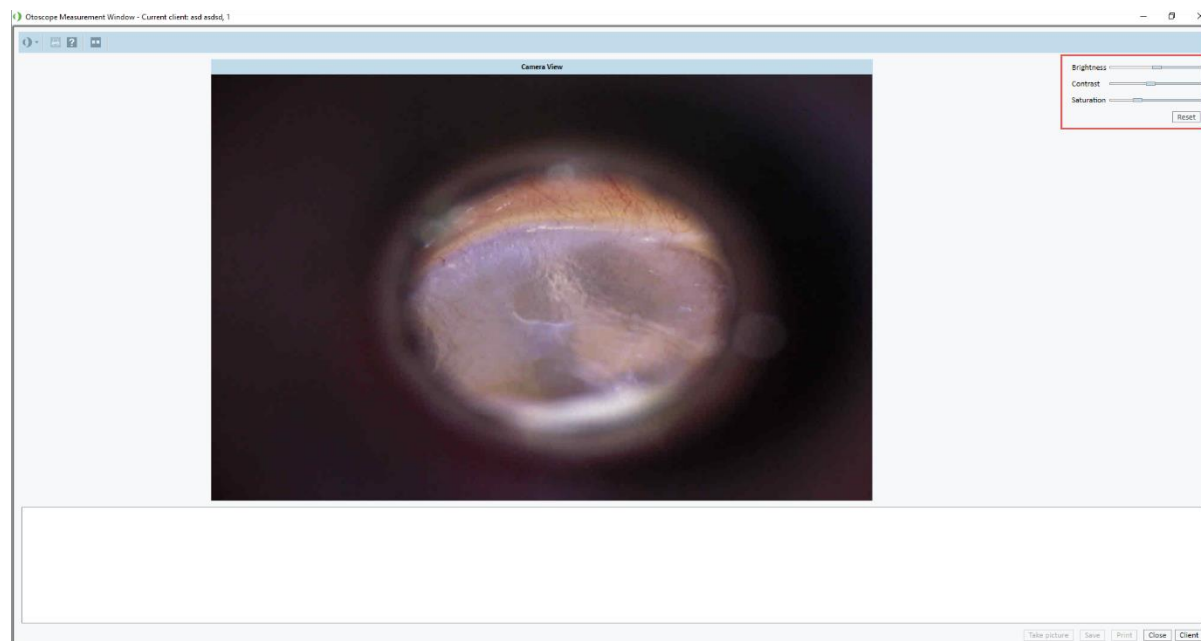
4.2 Otoscope Video and Picture quality settings

As of release 3.3.1, the video and picture quality settings can be adjusted to provide the optimal rendering quality.

Users can manipulate:

- Brightness
- Contrast
- Saturation

Clicking **Reset** returns the controls to their defaults.



5 Release Notes 3.3.1

This version of the Primus software release contains the following enhancements:

License

- Pure Tone Audiometry module is now available as a standalone license (AudAir) that can be used for air-coupled testing only.

Audiometry

- Speech recognition threshold diagrams can now be configured without the 50% notation.

Otoscopy

- Primus now supports 4 different otoscope cameras.
- Image and Video quality controls have been added to the Otoscopy module.

Supported Languages

- English, German, French, Polish, Turkish, Danish, Finnish, Spanish, Italian, Hungarian, Chinese, Korean and Japanese.

Dependencies

This version supports NOAH versions 4 or higher. To use the Primus Panel under Auditbase System, Auditbase version 4.17.01 or higher is required.

Installation

To upgrade to Primus 3.3.1:

1. Run the set-up file: Setup_Primus_3_3_1.exe.
2. Follow the instructions on the screen and your system will be updated.

6 Support

For further information, please visit www.auditdata.com.