

Measure

What's New

version 6.3.1

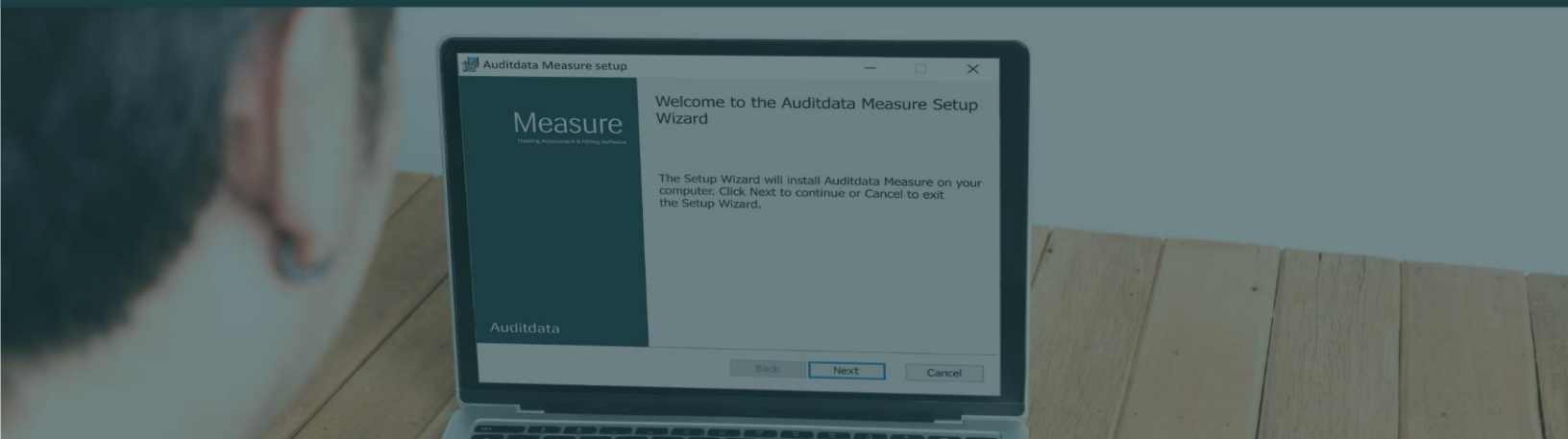


Table of Contents

- 1 Introduction3
- 2 SRT Type Now Included in NOAH Records.....3
- 3 Hide Workflow Comments in Printed Reports3
- 4 New CD Scheme: Lista Palabras.....4
- 5 Release Notes 6.3.15
- 6 Support5

1 Introduction

We are pleased to announce the release of Measure 6.3.1, a maintenance update that addresses customer feedback and delivers small but impactful enhancements.

This hotfix release focuses on improved support for insurance reporting standards and increased flexibility in reporting configuration, particularly benefiting clinics operating in the United States.

2 SRT Type Now Included in NOAH Records

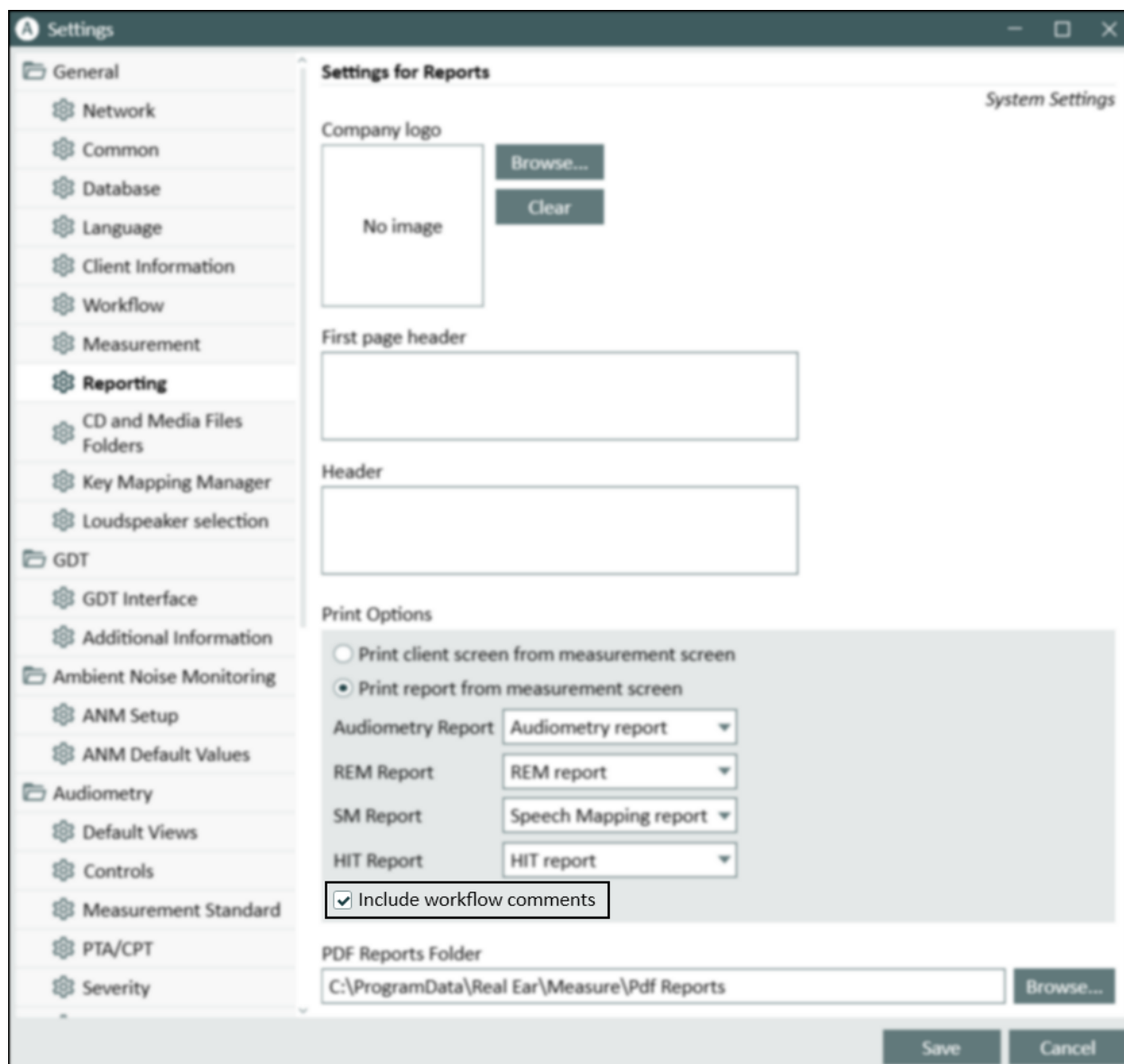
In compliance with NOAH data standards, the speech recognition test type is now saved and made visible in NOAH.

The SRT type (SRT, SAT, SDT) will appear in NOAH without needing to access the data through Measure. This change enables clinics to generate and submit accurate reports for insurance claims.

3 Hide Workflow Comments in Printed Reports

A new setting has been added under **Tools > Settings > Reporting** to control the visibility of workflow comments in printed reports.

- **Default:** Workflow comments are shown.
- **New Option:** Users can now disable this, keeping clinical notes internal.



This update responds to feedback customers who regularly share reports with patients and require more control over what information is included.

4 New CD Scheme: Lista Palabras

A new CD schema titled Lista Palabras is now available in the list of media files. Users selecting speech materials for testing will now see this option alongside existing choices.

5 Release Notes 6.3.1

Besides mentioned above, this version of the Measure software contains the following enhancements:

Bug fixes

Dependencies

This version requires NOAH 4.7 or later, with NOAH 4.16 recommended for security enhancements. To use the Primus Panel under Auditbase System, Auditbase version 4.17.01 or higher is required.

Installation

The uninstallation of the previous version is done automatically.

To upgrade to Measure 6.3.1:

1. Run the set-up file: **Setup_Measure_6_3_1.exe**.
2. Follow the instructions on the screen.

6 Support

For further information, please visit www.auditdata.com.